

Inmagic® DB/Text® *WebPublisher PRO* 9.00

Installation and Upgrade Notes

Thank you for purchasing Inmagic® DB/Text® *WebPublisher PRO*. This document is for new *WebPublisher PRO* installations and for sites that are upgrading to version 9.00.

WebPublisher PRO lets you add, update, and/or delete records in Inmagic® DB/TextWorks® textbases from a Web browser, making your textbases interactive over an intranet, extranet, or the Internet.

WebPublisher PRO combines searching power with Extensible Markup Language (XML) capabilities. This allows you to integrate your DB/TextWorks textbases with other applications and create interactive forms using standard third-party tools (such as, Microsoft FrontPage).

This document has the following sections:

- “About Installing *WebPublisher PRO*” below
- “System Requirements” on page 2
- “About Creating the Virtual Directories” on page 3
- “Installing *WebPublisher PRO*” on page 3
- “Setting the Access Rights for the Virtual Directories” on page 10
- “Setting Windows Permissions” on page 12
- “Testing *WebPublisher PRO*” on page 19
- “Getting Started” on page 19

About Installing *WebPublisher PRO*

To use *WebPublisher PRO*, you need to install two separate products: Inmagic DB/TextWorks and *WebPublisher PRO*. It does not matter which one you install first, and they can be on different machines. To install DB/TextWorks, refer to the installation notes provided with that product.

System Requirements

We recommend the following to use the full Read-Write capabilities of *WebPublisher PRO*:

- Intel Pentium processor, 500 MHz or higher.
- One of the following operating systems:
 - Windows 2003 Server with Service Pack 1.
 - Windows 2000 Professional with Service Pack 4.
 - Windows 2000 Server with Service Pack 4.
 - Windows XP Professional with Service Pack 2.
- 512 MB RAM or greater.
- 10 MB available disk space (to install), 100 MB+ available (working storage).
- Microsoft Internet Information Services (IIS) version 5.0 or later.
- Microsoft .NET Framework Version 1.1 is required for the Inmagic Choices Browser. You can download .NET Framework from the Microsoft Downloads page at www.microsoft.com. You must also ensure that ASP.NET (a Web service extension) is registered on the machine; see page 11.
- Microsoft Internet Explorer version 6.0 or later installed on the server (to support XML functionality).
- TCP/IP installed and running.
- An IP address and/or a domain name. If the server is connected to the Internet, the IP address needs to be registered.
- ISAPI or CGI. (*WebPublisher PRO* supports both. We recommend ISAPI.)

Note that these requirements are accurate as of the original publication date for this installation notes document. For the most up-to-date system requirements, go to the Inmagic Web site.

About Creating the Virtual Directories

To use *WebPublisher PRO*, you must create a virtual directory (also known as an alias) and map it to the *WebPublisher PRO* installation folder (for example, C:\Program Files\Inmagic\WebPubPRO).

With IIS, Setup can create and configure the DBTW-WPD virtual directory for you during the *WebPublisher PRO* installation. You will be asked during the installation process whether you want Setup to create it automatically, or whether you want to set it up yourself.

A virtual directory is also required for the index and validation list browsing on the Web feature that is provided through the Inmagic Choices Browser. During the *WebPublisher PRO* installation process, Setup can also create the InmagicBrowse virtual directory for you.

Installing *WebPublisher PRO*

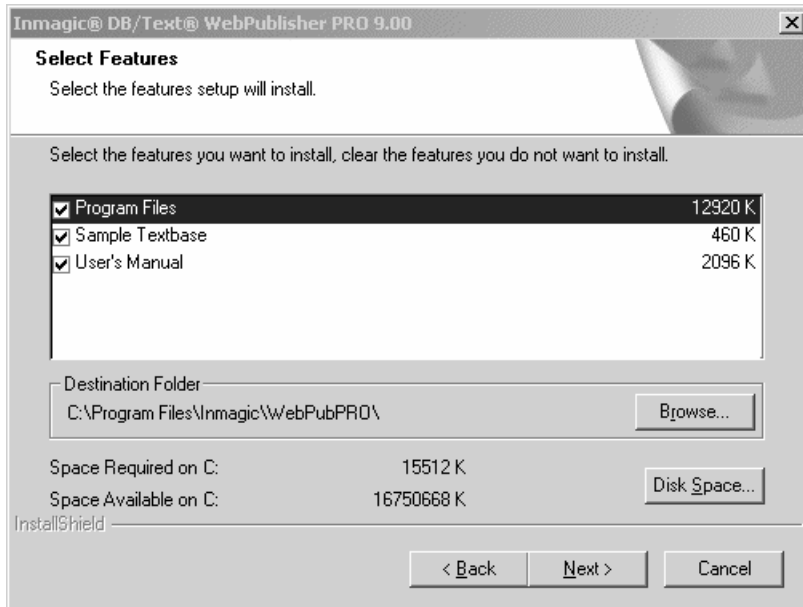
To install *WebPublisher PRO*

1. On the Web server, log in with Administrator privileges.
2. If you are installing over an existing copy of *WebPublisher PRO* or Inmagic DB/Text *WebPublisher*, you must stop IIS (the World Wide Web Publishing Service) using the Services option through the Windows Computer Management window.
3. Depending on your situation, do the following:
 - If you are installing from the Inmagic *WebPublisher PRO* Setup CD-ROM, insert it in the machine's drive. Setup should automatically start. If it does not, open Windows Explorer and from the installation CD-ROM, double-click **Setup.EXE**.
 - If you downloaded the *WebPublisher PRO* ZIP file, you must first unzip it to a temporary folder, then, from within that folder, double-click **Setup.EXE** to launch the program to install the product.
4. If you do not have Microsoft .NET Framework Version 1.1 installed, Setup will detect this and display a notification message. You must exit Setup, install Microsoft .NET Framework Version 1.1, and then run Setup again.
5. If Internet Explorer 6.0 or later is not installed on this machine, a notification message appears and asks if you want to continue with Setup. You can continue, but note that *WebPublisher PRO* will not have XML functionality, which means that editing over the Web will not work. If this is acceptable, click **Yes**. Otherwise, click **No** and install Internet Explorer 6.0 or later, then run Setup again.
6. On the Welcome dialog box, click **Next**.
7. On the License Agreement dialog box, read the license agreement, then respond appropriately.
8. On the Customer Information dialog box, enter your name, the company name, and the *WebPublisher PRO* serial number, then click **Next**.

Note for upgrade installations: Your serial number should be filled in automatically when you install version 9.00 on the machine on which you installed an earlier version of *WebPublisher PRO*.

9. On the Select Features dialog box:

- For Features, accept or clear the check boxes, as appropriate:
 - ◆ **Program Files.** Installs *WebPublisher PRO* version 9.00.
 - ◆ **Sample Textbase.** Installs the *Cars* sample textbase supplied with *WebPublisher PRO*.
 - ◆ **User's Manual.** Installs a PDF file of the *Inmagic DB/Text WebPublisher PRO User's Manual*.

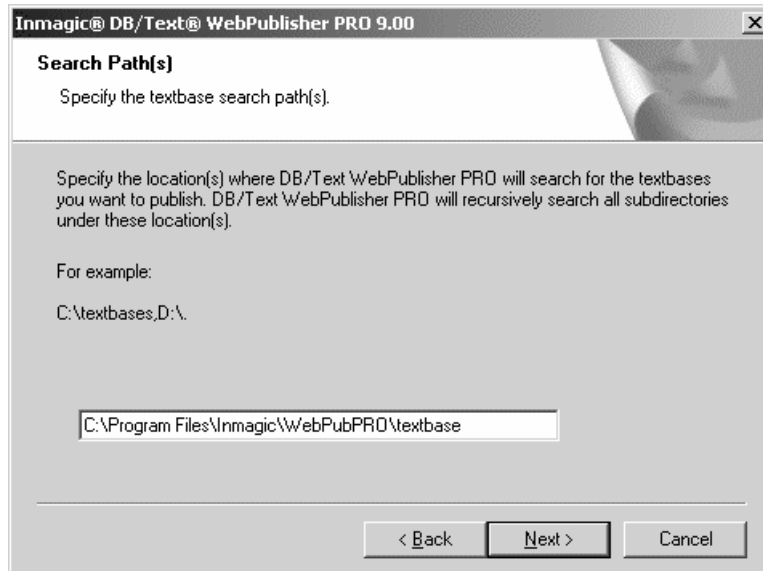


- For Destination Folder, specify the folder on the Web server in which you want *WebPublisher PRO* installed (for example, C:\Program Files\Inmagic\WebPubPRO\). You can accept the default location or click **Browse** to change it.

Click **Next**.

10. On the Search Path(s) dialog box, specify one or more locations where you want *WebPublisher PRO* to search for the textbases you will publish. When necessary, *WebPublisher PRO* can recursively search all subfolders under those locations when a query is submitted.

Note: You must give the account used by *WebPublisher PRO* Full Control access to any folder in which a textbase you want to modify using *WebPublisher PRO* is located. If the DBTW-WPD virtual directory is using Anonymous access, the account defaults to IUSR_<machine>. If the virtual directory is using Basic or Integrated Windows Authentication, the account is the user's login.



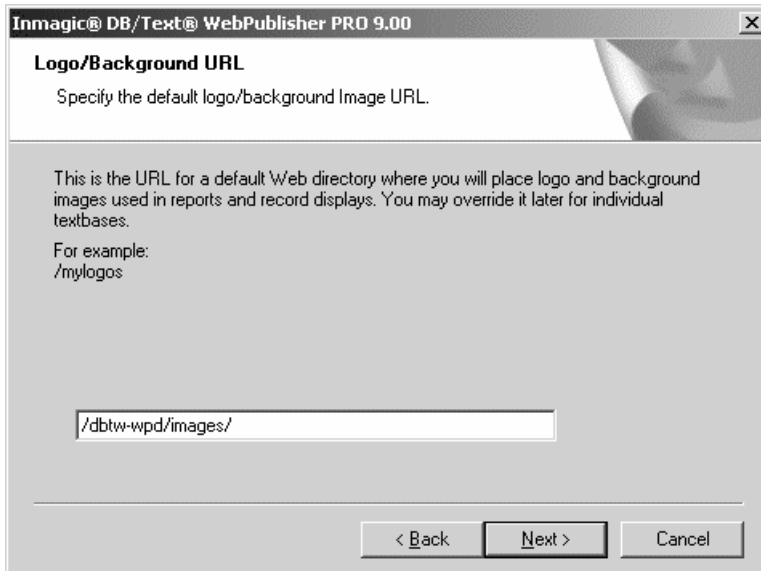
Use a comma to separate multiple locations. If you specify a machine other than the Web server, use the Universal Naming Convention (UNC) directory name instead of a drive letter. For example:

```
C:\WEBPUB\TEXTBASE\ , C:\DATA , \\SERVER2\TBS
```

The locations you specify are written to an initialization file called DBTWPUB.INI, located in the installation folder. Later, you can edit that file to add or change locations.

Click **Next**.

11. On the Logo/Background URL dialog box, type the URL for a default Web folder where you will place logo and background image files used on forms.



For example, if you keep images in the MYLOGOS subfolder under the server root folder, type `/MYLOGOS/`. The leading slash (/) makes the URL relative to the current server root. Specify the full path (for example, `http://hostname/mylogos/`) only if the Web server where the images reside is different from the installation server.

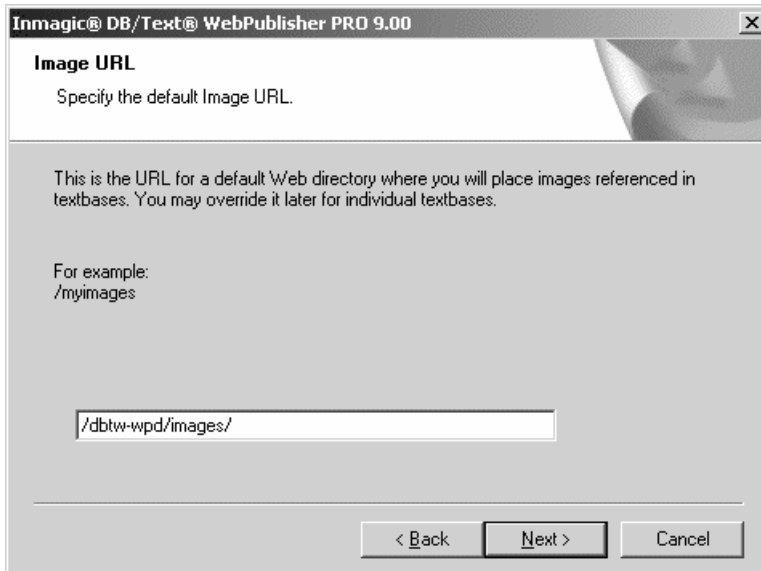
The URL you specify does not have to exist and will not be created automatically. It is simply a text string that *WebPublisher PRO* will insert in front of image file names. For example, if you specify `/MYLOGOS/` as the URL, *WebPublisher PRO* will construct URLs such as `/mylogos/acme.gif`.

Note: If you plan to keep images in a subfolder under the *WebPublisher PRO* installation folder, use the virtual directory name in the URL. For example, type `/DBTW-WPD/MYLOGOS/`.

The URL you specify will be written to an initialization file called `DBTWPUB.INI`, located in the installation folder. Later, you can edit that file to add or change locations.

Click **Next**.

12. On the Image URL dialog box, type the URL for a default folder where you will place image files referenced in textbase records.



For example, if you keep textbase record images in the MYIMAGES subfolder under the server root folder, type /MYIMAGES/. The leading slash (/) makes the URL relative to the current server root. Specify the full path (for example, `http://hostname/myimages/`) only if the Web server where the images reside is different from the installation server.

The URL you specify does not have to exist and will not be created automatically. It is simply a text string that *WebPublisher PRO* will insert in front of textbase image file names. For example, if you specify /MYIMAGES/, *WebPublisher PRO* will construct URLs such as `/myimages/car.jpg`.

Note: If you plan to keep images in a subfolder under the *WebPublisher PRO* installation folder, use the virtual directory name in the URL. For example, type `/DBTW-WPD/MYIMAGES/`.

The URL you specify will be written to an initialization file called DBTWPUB.INI, located in the installation folder. Later, you can edit that file to add or change locations.

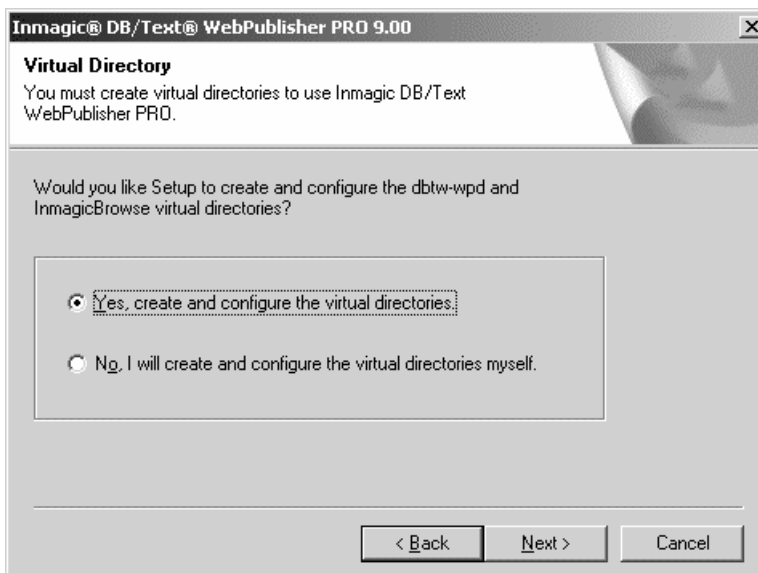
Click **Next**.

13. On the Choose Application dialog box, specify whether to use the ISAPI or CGI interface to *WebPublisher PRO*, then click **Next**. We recommend ISAPI. Note that support for both versions is installed. If you need to switch later, run ISAPI.BAT in the JSCRIPT subfolder to switch to using ISAPI, or run CGI.BAT to switch to using CGI.



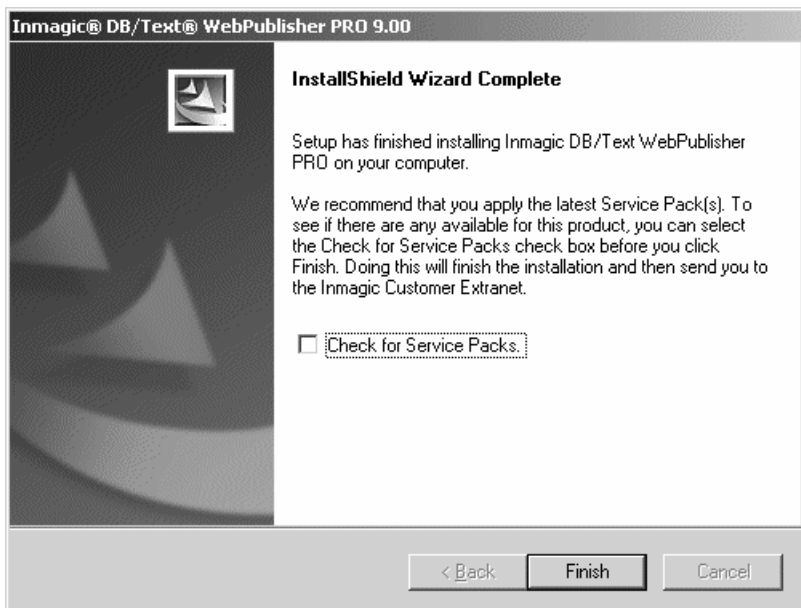
14. On the Virtual Directory dialog box, specify whether you want Setup to create and configure the DBTW-WPD and InmagicBrowse virtual directories or whether you will create them yourself later, then click **Next**. We recommend that you let Setup create the virtual directories for you.

Note for upgrade installations: If you have these two virtual directories installed already on your machine from a previous installation of version 8.00, you should select the **No** option button. If you have a version of *WebPublisher PRO* earlier than version 8.00, you should select the **Yes** option button. The InmagicBrowse virtual directory was first introduced in version 8.00.



15. Wait while Setup installs the necessary files.
16. On the Installation Almost Complete dialog box, select or clear the check boxes, as appropriate, then click **Next**.
 - **View the README.**
 - **View the Inmagic Web Schema Documentation.**

17. If you selected any of the check boxes in the previous step, read or print the information that appears, then close their windows to continue with the installation/upgrade process.
18. If applicable, a message appears to confirm the creation of the virtual directories. Click **OK**.
19. On the InstallShield Wizard Complete dialog box, we recommend that you check for the latest service packs. Click **Finish**.



Note: If Setup determines that you have to reboot your computer, the InstallShield Wizard Complete dialog box provides you with an option to restart your computer when you click the **Finish** button. If this is the case, you **must** reboot your computer to complete the installation/upgrade process.

20. If you stopped IIS (the World Wide Web Publishing Service) in step 2, restart it now using the Services option through the Windows Computer Management window. Note that if you rebooted your machine due to the previous step, the service will have been restarted for you.
21. If you did not let Setup create the DBTW-WPD and InmagicBrowse virtual directories for you, you must create and configure them yourself and set appropriate access rights. See “Setting the Access Rights for the Virtual Directories” on page 10.
22. Using Windows Explorer, specify the appropriate Windows permissions for the Windows System folder, the *WebPublisher PRO* installation folder tree, the QSETS subfolder, the SAMPLE subfolder (if you plan to modify the sample textbase over the Web), and the DBTW-PUB.INI file. See “Setting Windows Permissions” on page 12 for the permissions needed and instructions for how to do this.

Setting the Access Rights for the Virtual Directories

If you did not let Setup create the *WebPublisher PRO* virtual directory (DBTW-WPD) for you, you must create it yourself. The same is true for the *InmagicBrowse* virtual directory. For information on how to create a virtual directory, see your Web server documentation.

Once you have created the DBTW-WPD and *InmagicBrowse* virtual directories, you must give the Internet user account specific access rights to several *WebPublisher PRO* folders and files. See your Web server documentation for information about the Internet user account. See your Windows documentation for information about using Windows Explorer to set access rights.

For IIS, you may find it easiest to assign the following access rights for the Internet user account.

Note: Depending on your operating system, how you specify access rights may vary slightly. For example, to specify Scripts access on a Windows 2000 machine, you select **Scripts only** from a drop-down list.

To set access rights for the DBTW-WPD virtual directory

1. **Read-Write** access to the root of the *WebPublisher PRO* installation directory (DBTW-WPD), so the software can write to the DBTWPUB.INI file.
2. **Read** access to the APPLETS subdirectory.
3. **Read** and Execute Permissions set to **Scripts only** access to the ASP subdirectory.
4. **Read** and Execute Permissions set to **Scripts and Executables** access to the EXEC subdirectory.
5. **Read** access to the JSCRIPT subdirectory.
6. **Read-Write** access to the QSETS subdirectory.
7. **Read** and Execute Permissions set to **Scripts only** access to the SAMPLE subdirectory.
8. **Read** access to the SOAP subdirectory.
9. **Read** access to the TEXTBASE subdirectory.
10. **Read** access to the directories that correspond to the virtual directories specified for images and logos during installation or by editing the DBTWPUB.INI file. (If you accepted the defaults during the installation, this is the IMAGES subdirectory.)

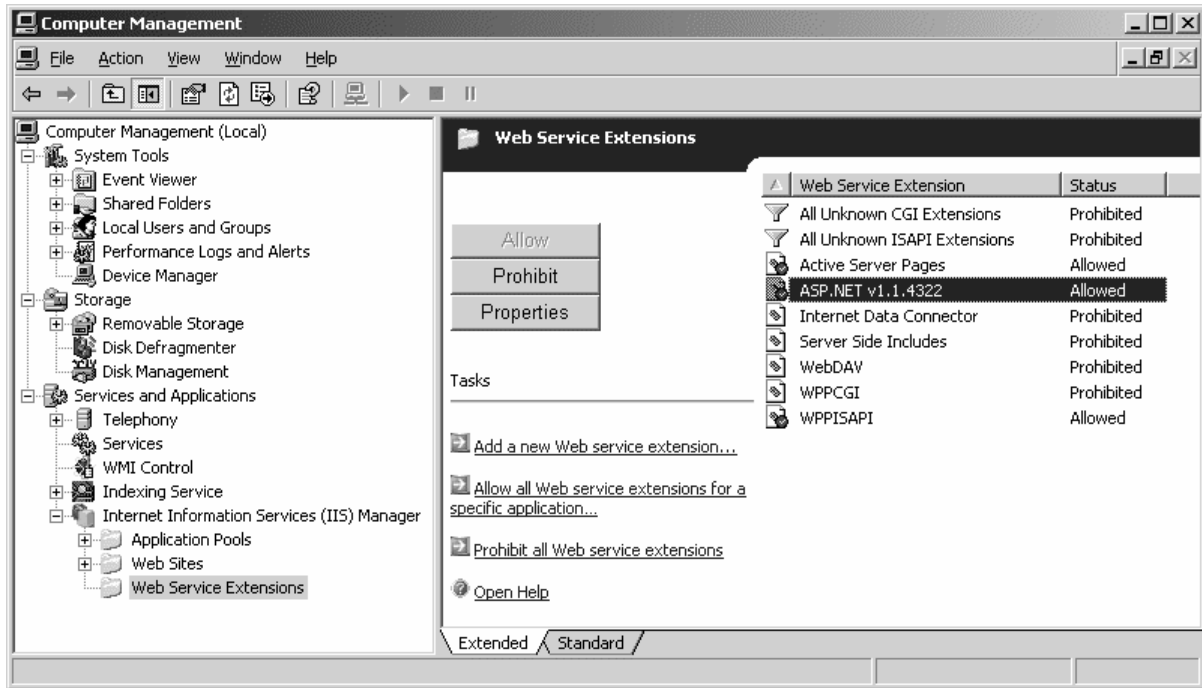
To set access rights for the InmagicBrowse virtual directory

Once you have created the *InmagicBrowse* virtual directory, you must give the Internet user account specific access rights as follows for the *InmagicBrowse* virtual directory.

1. **Read** access to the root of the *InmagicBrowse* installation directory (*InmagicBrowse*).
2. **Read** and Execute Permissions set to **Scripts and Executables** access to the BIN subdirectory.

About Web Service Extensions

The following illustration shows registered Web service extensions with the ones required by *WebPublisher PRO* set to **Allowed**. In this example, ISAPI is used.



Setting Windows Permissions

Before you can use *WebPublisher PRO*, you must set Windows permissions for the Windows System folder, the *WebPublisher PRO* installation folder tree, the QSETS subfolder, the SAMPLE subfolder (if you plan to add, edit, and/or delete records in the *Cars* textbase), and the DBTWPub.INI file. This section includes instructions for how to set these permissions.

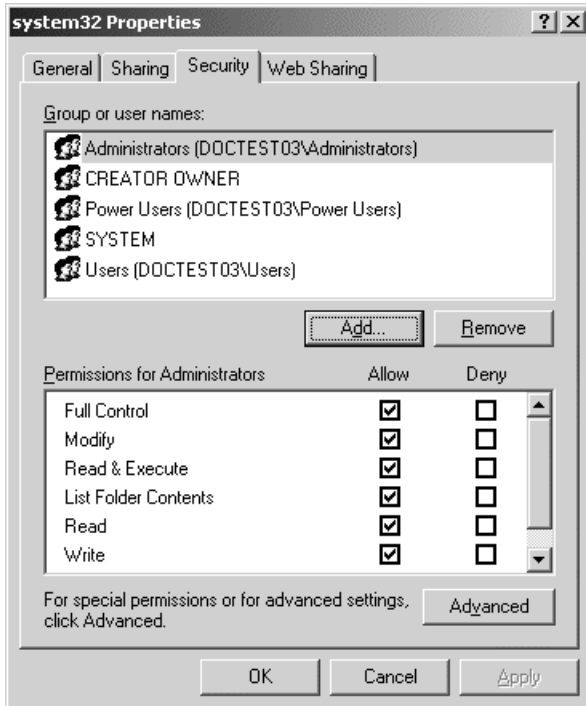
Important! In addition to the Windows permissions listed above, you must also provide Read access to any folders containing textbases that will be searched, or Full Control if *WebPublisher PRO* will be updating the textbases.

The instructions in this section apply only to operating systems using NTFS for storing and retrieving files on a hard drive.

See your operating system documentation for more information.

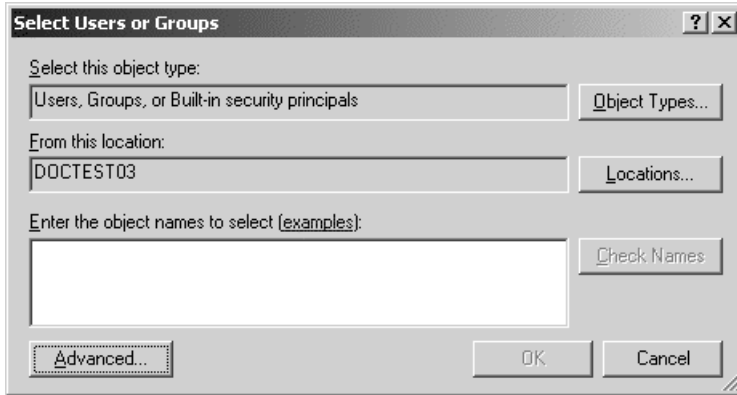
To set permissions for the Windows System folder

1. Right-click the Windows System folder (for example, C:\WINNT\SYSTEM32) and choose **Properties** from the shortcut menu.
2. On the Security tab, click the **Add** button.

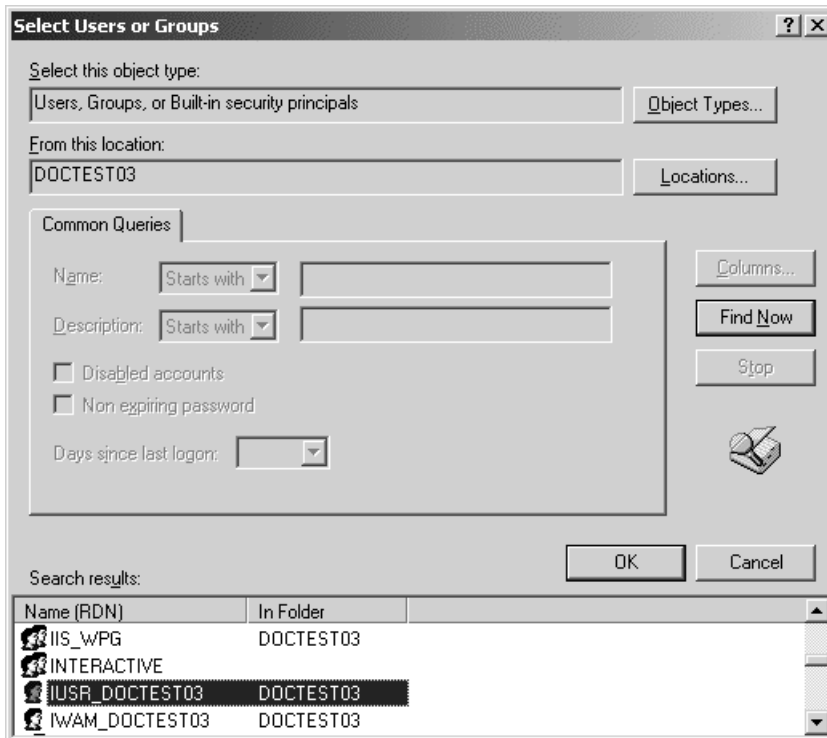


3. If necessary, click the **Locations** button to open the Locations dialog box and select the Windows domain.

- When your Windows domain is showing in the **From this location** box, click the **Advanced** button to open the Select Users or Groups dialog box.

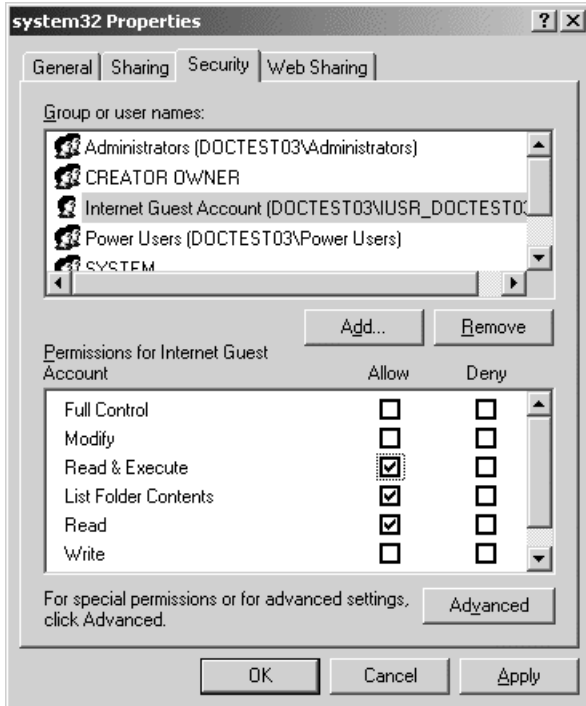


- Click the **Find Now** button to display a list of your user/group accounts in the **Search results** box.
- Select the **IUSR_<machine>** account from the list, then click **OK**.



- Click **OK** again to return to the Properties dialog box.

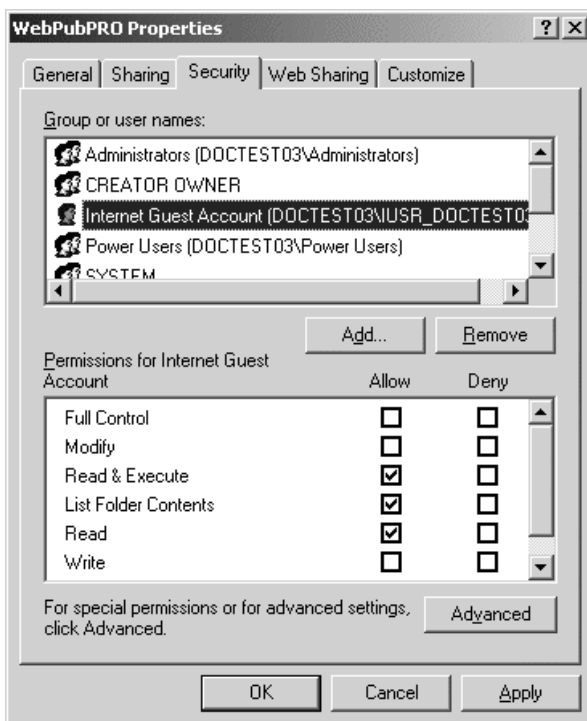
- On the Security tab, for the **IUSR_<machine>** account, select the **Read & Execute** check box if it is not already selected.



- Click **OK**.

To set permissions for the *WebPublisher PRO* installation folder tree

1. Right-click the installation folder (for example, C:\Program Files\Inmagic\WebPubPRO\) and choose **Properties** from the shortcut menu.
2. On the Security tab, click the **Add** button.
3. If necessary, click the **Locations** button to open the Locations dialog box and select the Windows domain.
4. When your Windows domain is showing in the **From this location** box, click the **Advanced** button to open the Select Users or Groups dialog box.
5. Click the **Find Now** button to display a list of your user/group accounts in the **Search results** box.
6. Select the **IUSR_<machine>** account from the list, then click **OK**.
7. Click **OK** again to return to the Properties dialog box.
8. On the Security tab, for the **IUSR_<machine>** account, select the **Read & Execute** check box if it is not already selected.

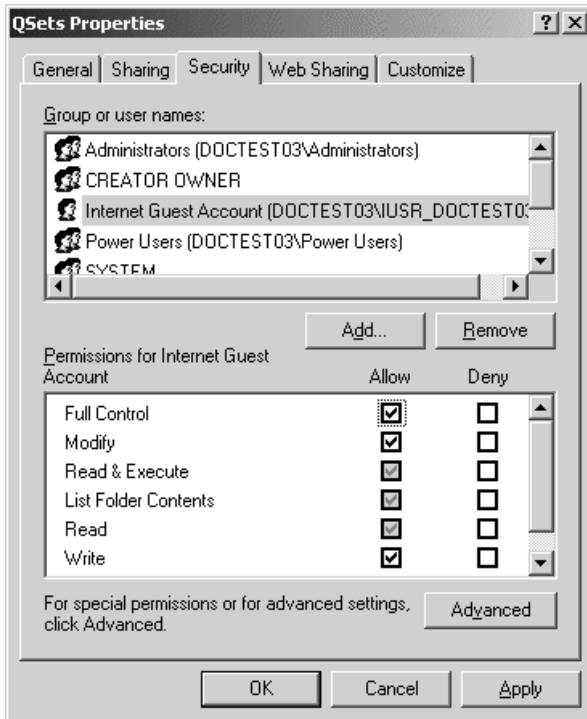


9. Click **OK**.

To set permissions for the QSETS subfolder

Note that QSETS permissions must be set after permissions are set for the installation folder tree (see above). This set of steps assumes you have already set the permissions for the *WebPublisher PRO* installation folder tree (so that the **IUSR_<machine>** account already appears on the name list).

1. Right-click the QSETS subfolder under the installation folder (for example: C:\Program Files\Inmagic\WebPubPRO\QSETS\) and choose **Properties** from the shortcut menu.
2. On the Security tab, select the **IUSR_<machine>** account, then select the **Full Control** check box.



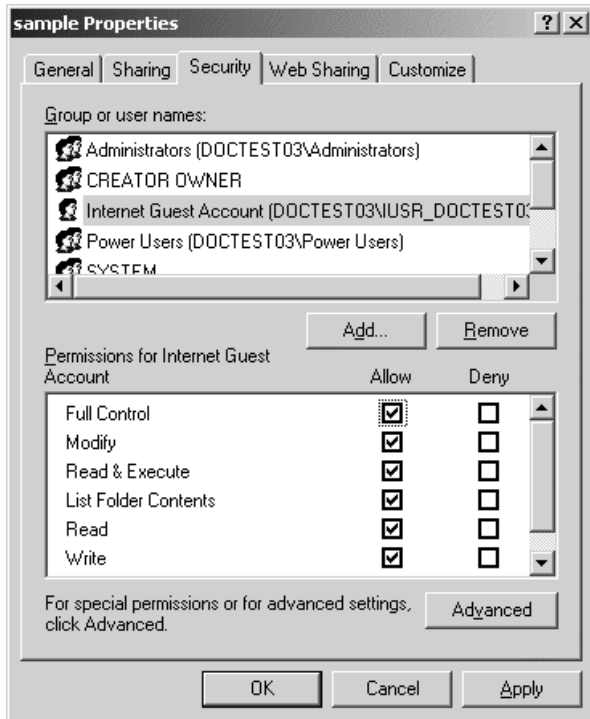
3. Click **OK**.

Note: If you are on a Windows 2003 Server machine, you may have to add the IIS_WPG account to the QSETS subfolder and also give it Full Control access.

To set permissions for the SAMPLE subfolder

If you plan to add, edit, and/or delete records in the sample *Cars* textbase (for example, if you plan to follow the tutorial provided in the *Inmagic DB/Text WebPublisher PRO User's Manual*), you must give your IUSR account Full Control access to the SAMPLE subfolder (in which the textbase resides).

To set this access, follow the instructions for setting permissions for the QSETS subfolder (see above), except in step 1, right-click the SAMPLE subfolder under the installation folder (for example: C:\Program Files\Inmagic\WebPubPRO\SAMPLE\).

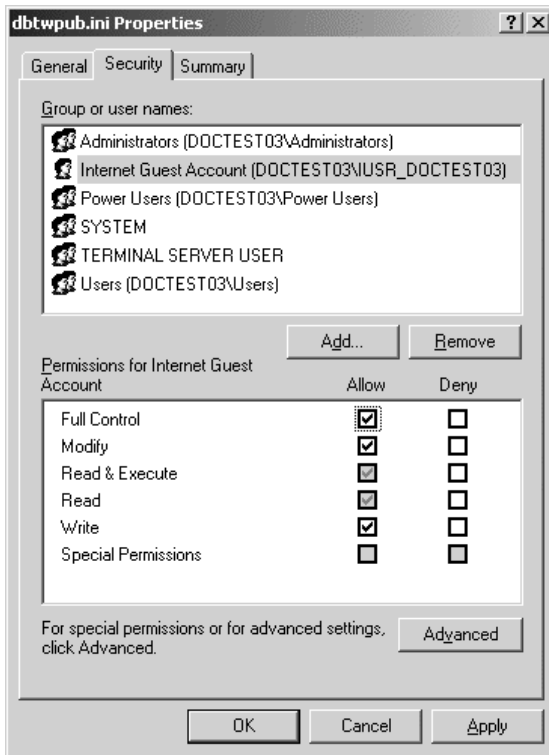


Important! You must give your IUSR account Full Control access to any folder containing a textbase that you plan to modify over the Web.

To set permissions for the DBTWPub.INI file

This set of steps assumes you have already set the permissions for the *WebPublisher PRO* installation folder tree (see page 15), so that the **IUSR_<machine>** account already appears on the name list.

1. Locate the DBTWPub.INI file in the installation folder, right-click it, and choose **Properties** from the shortcut menu.
2. On the Security tab, select the **IUSR_<machine>** account, then select the **Full Control** check box.



3. Click **OK**.

Note that despite the fact that the **IUSR_<machine>** account is normally a member of the Guests and Everyone groups, you must set permissions explicitly for the **IUSR_<machine>** account.

Note: If the textbases are on a different machine than the Web server, then the **IUSR_<machine>** account cannot be used. You must use a valid domain account with the proper security permissions.

To use Basic Authentication with the Inmagic Choices Browser

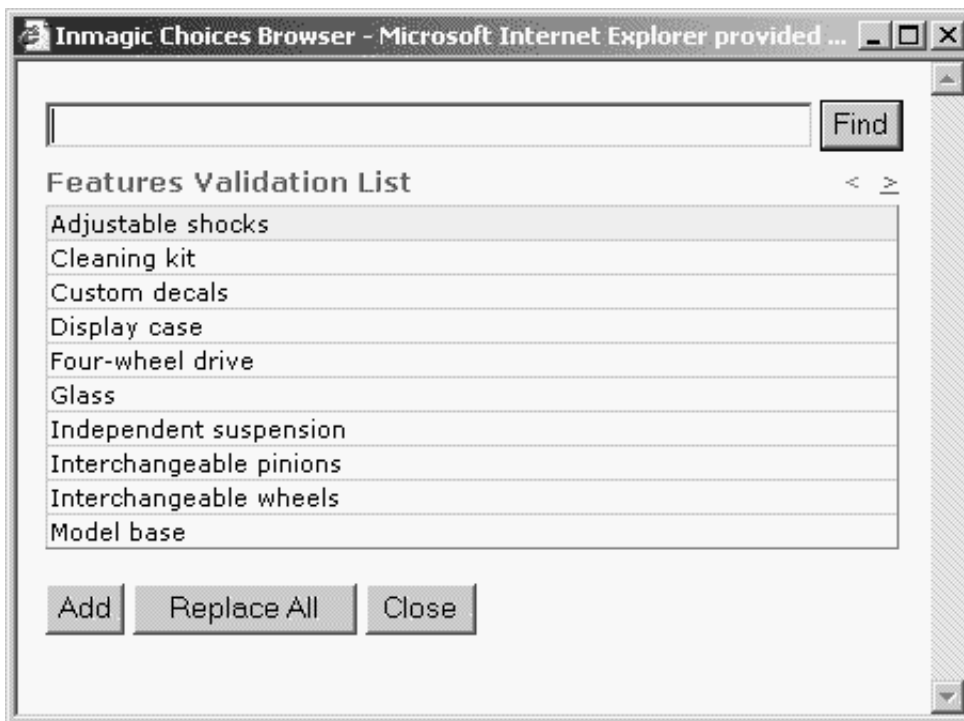
In order to use Basic Authentication with the Inmagic Choices Browser, you need to modify the value for key="BasicAuth" to true in the <appSettings> section of the Web.CONFIG file in the InmagicBrowse virtual directory, so that it looks like this:

```
<add key="BasicAuth" value="true" />
```

Testing *WebPublisher PRO*

After you have completed the installation of the *WebPublisher PRO* product, perform the following test to make sure it is accessible. If any of these steps fails, then there may be a problem with the installation or Web (IIS) setup. If an error message appears anywhere during this test, check the Inmagic Knowledgebase. You can access the knowledgebase through the Inmagic Customer Extranet at <http://support.inmagic.com/downloads/extranet.html>. Make a note of the exact text of the message or print the page in case you need to contact Inmagic Technical Support.

1. Open your Web browser and point to `http://WebServerName/dbtw-wpd/sample/carsqs.htm`. Fill in the name of your Web server where the *WebPublisher PRO* product was installed. The DBTW-WPD virtual directory was created when you installed *WebPublisher PRO*.
2. On the Search Cars page, type an asterisk (*) in the **Model Type: Assembled or Kit?** box.
3. On the search results page, select **Prices (edit links)** from the drop-down list.
4. Click the first **Edit Record** link (in the **1935 Ford** row).
5. Click the **Features** link. The following illustration shows what the Inmagic Choices Browser should look like.



6. Close the Inmagic Choices Browser.
7. Click the **Submit Record** button—you do not have to make any changes to the record. Verify that the Your record was saved. message appears.

Getting Started

Once you have installed *WebPublisher PRO*, you can refer to the DB/TextWorks online help and the user's manual for *WebPublisher PRO* to learn about the product.

For a list of the documentation available for *WebPublisher PRO*, see its README file. You received electronic copies of the *WebPublisher PRO* documentation set when you installed this product. You will find them in the Documentation subfolder of the main installation folder. In addition, you can access the documentation set through the Inmagic Customer Extranet at <http://support.inmagic.com/downloads/extranet.html>.

Copyright © 2005 by Inmagic, Inc. All rights reserved.

Inmagic[®], the Inmagic logo, DB/Text[®], DB/TextWorks[®], BiblioTech[®], and BiblioTech PRO[®] are registered trademarks; and Inmagic.net[™], BibSpeed[™], IntelliMagic[™], and PowerPack[™] are trademarks of Inmagic, Inc.

Other brand and product names are trademarks or registered trademarks of their respective holders. Use of any other product name does not imply endorsement of that product by Inmagic, Inc.

The information in this document is subject to change without notice and should not be construed as a commitment by Inmagic, Inc., which assumes no responsibility for any errors that may appear in this document.

WARRANTY

INMAGIC, INC. MAKES NO WARRANTY, EXPRESS OR IMPLIED, INCLUDING BUT NOT LIMITED TO THE WARRANTIES OF MERCHANTABILITY AND FITNESS. INMAGIC, INC. SHALL NOT BE LIABLE FOR ANY LOST PROFITS OR ANY OTHER INCIDENTAL OR CONSEQUENTIAL DAMAGES. IN PARTICULAR, INMAGIC, INC. SHALL HAVE NO LIABILITY FOR ANY DATA OR PROGRAMS STORED OR USED WITH THIS PRODUCT, INCLUDING THE COSTS OF RECOVERING SUCH PROGRAMS OR DATA.

U.S. GOVERNMENT: If Licensee is acquiring the software on behalf of any unit or agency of the U.S. Government, the following shall apply:

(a) For units of the Department of Defense: RESTRICTED RIGHTS LEGEND: Use, duplication or disclosure by the Government is subject to restrictions as set forth in subparagraph (c)(1)(ii) of the Rights in Technical Data Clause at DFARS 252.227-7013. (b) For any other unit or agency: NOTICE - Notwithstanding any other lease or license agreement that may pertain to, or accompanying the delivery of, the computer software and accompanying documentation, the rights of the Government regarding its use, reproduction and disclosure are as set forth in Clause 52.227-19(c)(2) of the FAR.

Contractor/Manufacturer is Inmagic, Inc., 200 Unicorn Park Drive, Fourth Floor, Woburn, MA 01801, U.S.A.

Questions regarding any Inmagic product should be addressed to Inmagic, Inc.

Inmagic, Inc.
200 Unicorn Park Drive
Fourth Floor
Woburn, MA 01801 U.S.A.
Telephone: 781-938-4444 or 800-229-8398
Fax: 781-938-4446
<http://www.inmagic.com>

support@inmagic.com - technical support questions
CustomerSvc@inmagic.com - general company, product, and services questions
sales@inmagic.com - sales, product pricing, and custom solution questions
wishlist@inmagic.com - feature requests

1205